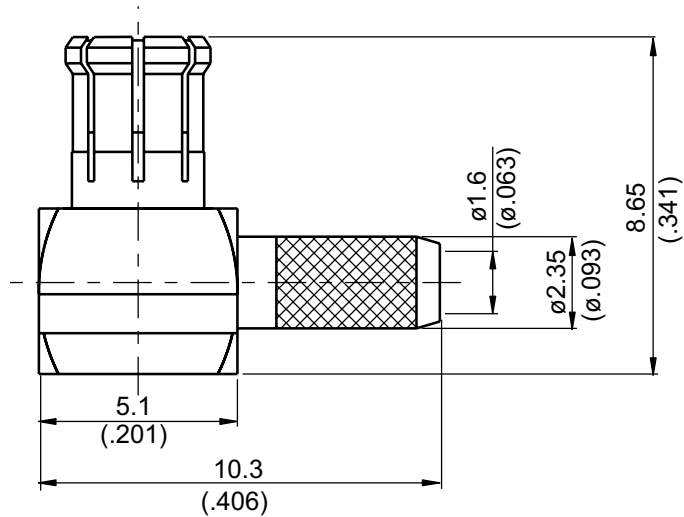


MCX3100-9316	MCX Plug Crimp Right Angle 50Ω
--------------	---------------------------------------



Parts	Material	Plating (Micro-inch)
Ferrule	Brass	Gold 5 Over Nickel 50 Over Copper 50
Cover	Brass	Gold 5 Over Nickel 50 Over Copper 50
Contact Pin	Brass	Gold 20 Over Nickel 50 Over Copper 50
Insulator	Teflon	
Body	Phosphor Bronze	Gold 5 Over Nickel 50 Over Copper 50

Weight: 1.18 g

Suitable Cables: RG174, RG188, RG316, RG316, RG316-E

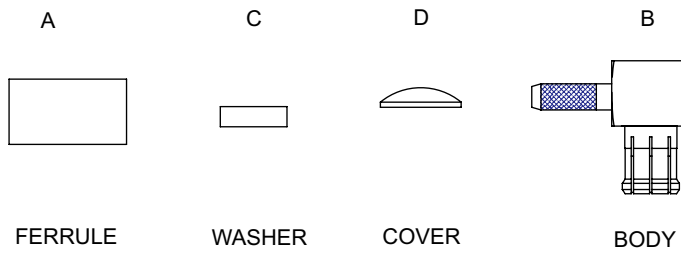
This part number complies with RoHS.

Notice: JYEBAO reserves the right to make modifications deemed appropriate.

CABLE ASSEMBLY INSTRUCTION

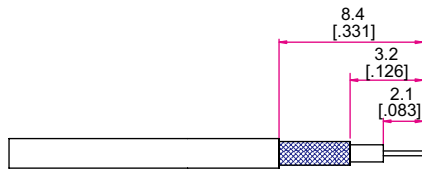
MCX3100-9316

JYE BAO CO., LTD.

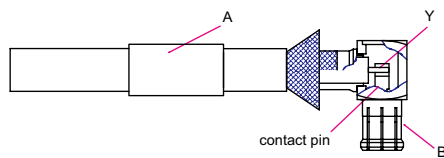


DIAGRAM

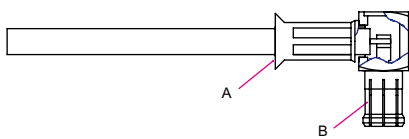
ASSEMBLY INSTRUCTION



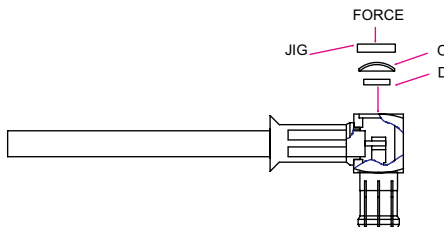
Step 1: STRIP AS SHOWN.



Step 2: SLIDE FERRULE "A" OVER CABLE.
 Step 3: WRAP THE BRAIDING UPWARDS.
 Step 4: SLIDE CENTER CONDUCTOR ON THE CONTACT PIN OF CONNECTOR "B" AND SOLDER IN "Y".



Step 5: SLIDE FERRULE "A" TOWARDS THE CONNECTOR "B" AND CRIMP.



Step 6: PRESS ON THE TOP OF "C" "D" WITH JIGS.

This part number complies with RoHS.

Notice: JYEBAO reserves the right to make modifications deemed appropriate.